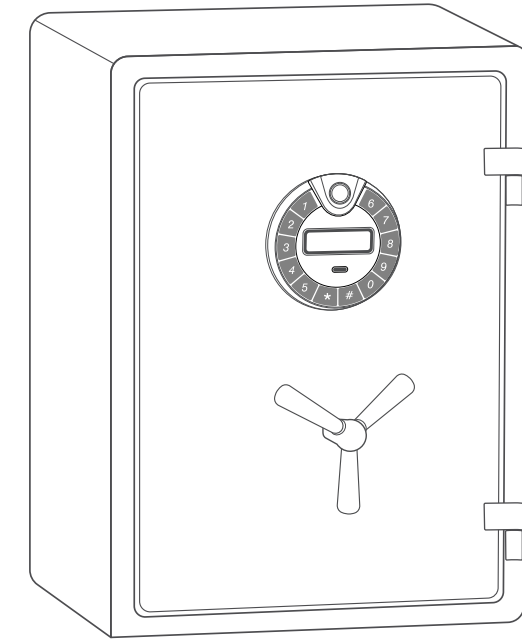


PROFESSIONAL BIOMETRIC DIGITAL FIREPROOF SAFE

Instruction Manual (A3 Series)

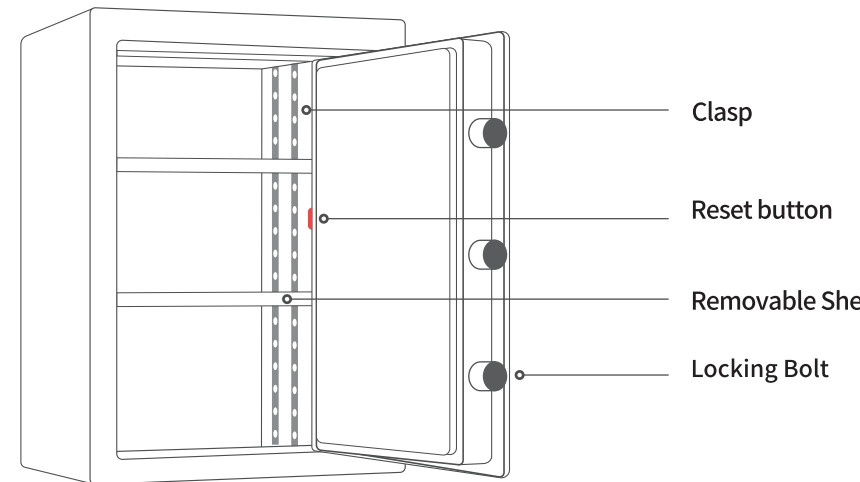
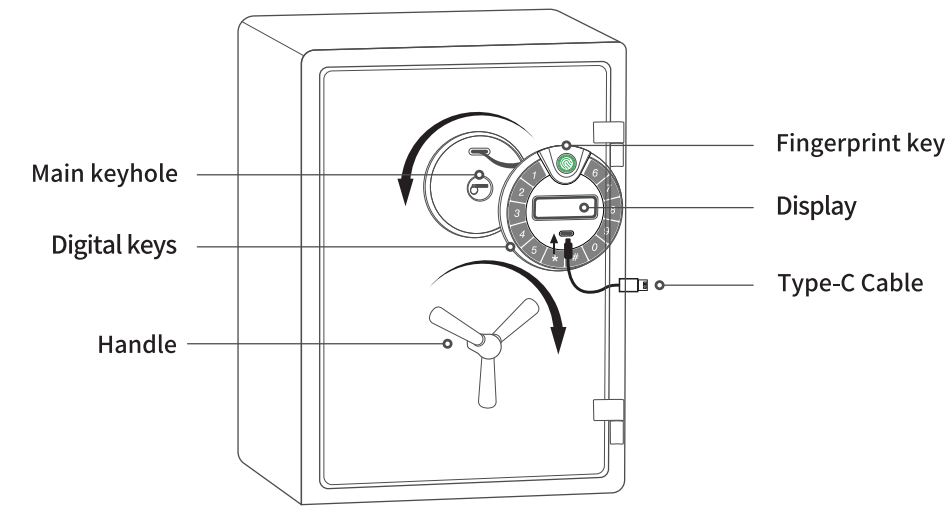


Please do not lock the emergency key in the safe

Have any issues? Please contact us.
Your satisfaction is our pursuit!

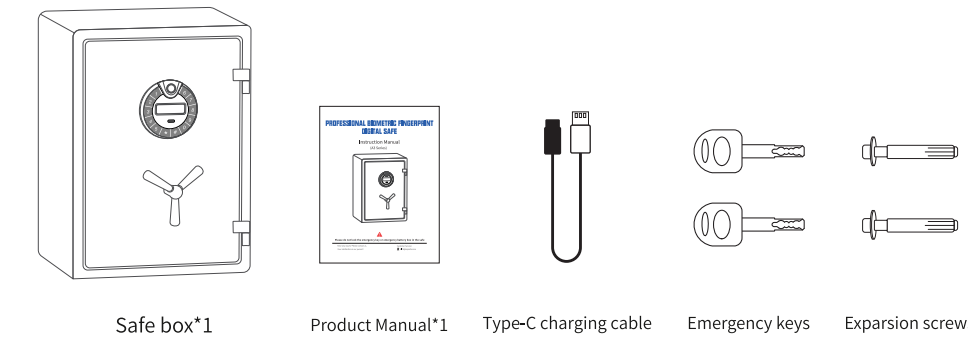
Customer Service:
VIP3@kepsafe.com

Product Structure Diagram



— 1 —

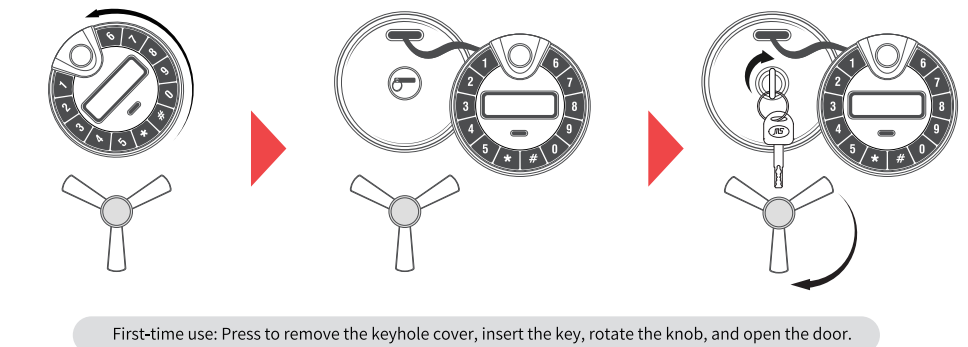
Product Structure Diagram



Product Features

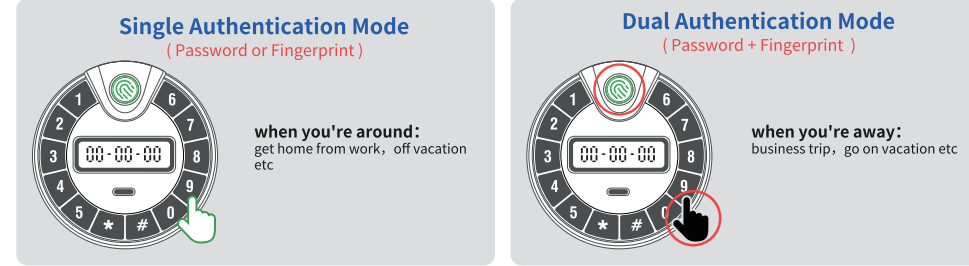
1. Default digital password: **1234**
2. Default fingerprint is blank (unregistered fingerprints cannot unlock the door).
3. Strong recommendation: After initial setup, register fingerprints and change the password before regular use.

First-time Use



— 2 —

Dual Mode



1. By default, the system is in single authentication mode (low security mode). After the system enters sleep mode, briefly press the setting button once.
2. Enter 1 #, and the LCD screen will display **"CC-Off"**, indicating that the single authentication mode has been successfully set.
3. Enter 2 #, and the LCD screen will display **"CC-ON"**, indicating that the dual authentication mode has been successfully set.

Note: To set the security mode, at least one fingerprint must be registered; otherwise, the setting cannot be completed.

Open Your Safe with Passcode

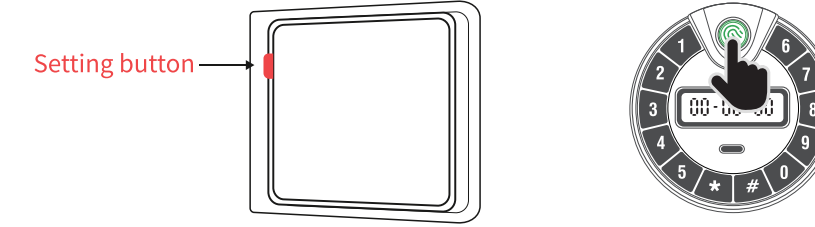
1. In standby mode, touch any key to wake up. When **"-----"** is displayed, you can enter the correct password and press the **"#"** key to confirm.
2. If the password is correct, **"OPEN"** will be displayed. The electromagnet will be engaged for 6 seconds, and the door can be opened.
3. If the password is incorrect, display **"ERROR"**, then display **"-----"** again, at which point you can re-enter the password.

Password Modification

1. In standby mode, briefly press the SET key.
2. Enter a 3-8 digit password, then press # to confirm. The buzzer will beep once.
3. LCD screen will display **"IN"** to indicate the password has been successfully set.

— 3 —

Fingerprint Settings



1. In standby mode, briefly press the Settings button once.
2. Press your finger—the screen will display **"FP-ROL"**, and the buzzer will beep once. Then remove your finger.
3. The screen will display **"FP-R2"**—after the buzzer beeps once, remove your finger and press again.
4. The screen will display **"FP-R3"**—after the buzzer beeps once, remove your finger and press again.
5. The screen will display **"FP-R4"**—after the buzzer beeps once, remove your finger and press again.
6. LCD displays **"SUCC"** → Modification confirmed

How to Clear Fingerprint Setting

1. In standby mode, press and hold the setting key for more than 3 seconds. When the LCD screen displays **"SUCC"**, it indicates that the fingerprint has been cleared and the password has been restored to **1234**. Returns to single authentication door opening

Vibration Alarm Function

1. Panel wake-up input: Press **"0#"** key → Digital display shows **"BE-ON"** → Auto-enters vibration alert mode
2. Effective alert status: Safe vibration triggers 30s alarm → Screen displays **"-----"**
3. Alert cancellation: Perform one correct door-opening operation → Alert status revoked

Low Battery Warning

When the voltage is low, **"Lo-BAT"** will be displayed when entering the password. replace batteries immediately.

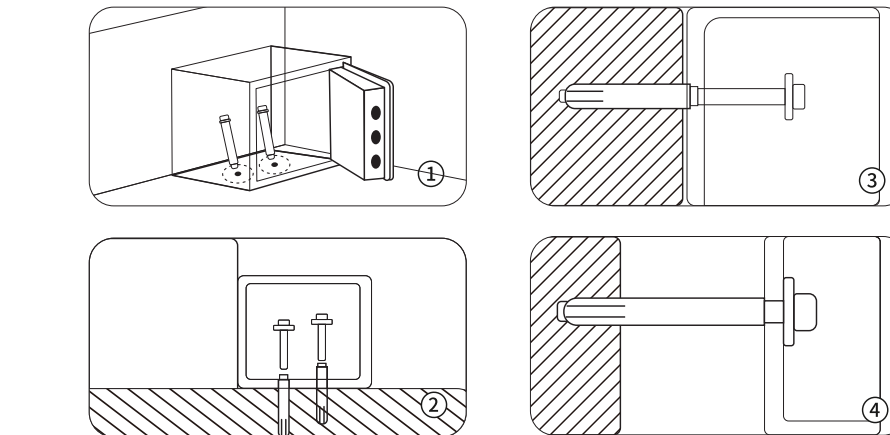
— 4 —

Hide and Detele Code

1. Clear Function: During the process of entering the password, each time the **"*"** key is pressed, the last digit entered can be cleared.
2. Hidden code Function: Before entering the password, press the **"*"** key first to switch the hidden code function. (When pressed once, the hidden code is used;) When pressed twice, the hidden code is invalid. When a hidden code is valid, subsequent input numbers will not be displayed but replaced by **"□"**.

Floor Mounted

- Select a stable, dry and secure location for your safe.
- ① Place the safe on the selected location. Use a pencil to mark the mounting holes on the floor or wall.
 - ② Move the safe and drill holes for expansion bolts (or clamping screws)
 - ③ Put the expansion bolt (included) into the mounting holes. then turn the clamping screw counterclockwise to separate.
 - ④ Make sure the safe is mounted in place as required and then tighten all screws.



Warm Reminder: Keep children away during assembly!

— 5 —

Free Key Replacement Procedure

Email to: VIP3@kepsafe.com

BODY MUST INCLUDE:

1. Model number: Found on the safe label or take a picture(e.g., FE Series)

2. Keyhole identification number:
Engraved near the keyhole (e.g., 3-digit code)



3. shipping address (street, city, ZIP, country)

IMPORTANT:

Standard delivery: **5-10** business days
Photo verification of the keycode may be required
The original order number may be requested for security validation

Manufacturer Name: Ningbo Beilun Deling Security Equipment Co., Ltd
Manufacturer's address: Beilun District, Ningbo, Zhejiang, China

MADE IN CHINA

Customer Service:

✉ VIP3@kepsafe.com
🌐 <https://www.kepsafe.com>
✉ support@kepsafe.com